

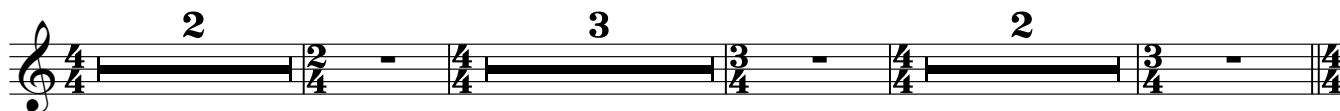
Alto
Alto

the colour of all things constant

as commissioned by the BBC, ABRSM and Music For Youth

Cassie Kinoshi (2024)
Words by Belinda Zhawi
Ten Pieces arr. Sarah Freestone

ethereal, powerful, lost in thought ♩ = 95



11 **A** a quieting of the mind

Musical notation for section A, starting at measure 11. It features a treble clef and two staves. The first staff has lyrics "ah shh ah shh" with dynamic markings *mf*, *f*, and *ff*. The second staff has lyrics "ah shh" with dynamic marking *ff*.

19 **B**

Musical notation for section B, starting at measure 19. It features a treble clef and two staves. The first staff has lyrics "friend friend" with dynamic marking *mp*. The second staff has lyrics "friend friend" with dynamic marking *mp*.

29

Musical notation for the final section, starting at measure 29. It features a treble clef and two staves. The first staff has lyrics "si - lent friend si - lent friend li - stens" with dynamic markings *mf* and *mp*. The second staff has lyrics "friend friend who li - stens li - stens" with dynamic markings *mf* and *mp*.

37 *mf* **C**

li - stens. A por - tal the co - lour of all things con - stant;__

li - stens. A por - tal the co - lour of all things con - stant;__

42

grass sky sun - shine grass sky sun - shine.

47 **D**

ah That act of ma - gic holds us

ah That ma - gic__

53 *mf*

with no - thing with no - thing but fin - ger - tips.

ma - gic no - thing but fin - ger - tips.

59 **E**

2 3

66 *sfmf* *f* *mp* **F** *mf*

ah shh Ask the cracked land how

ah shh

72

kind - ness sounds in these times of

77

rains have not have not have not.

rains have not have not come have

85 *f* *f*

In this drought of em - pa - thy kind - ness kind - ness

not. drought of em - pa - thy kind - ness kind - ness

92 **G** *mf* *mf*

kind - ness kind - ness cry - stal clear. In the

kind - ness kind - ness crys - tal clear. In the

99

sol - i - dar - i - ty of a pro - test march

sol - i - dar - i -

104

the gen - tle touch in a stran - gers'

110

eyes.

123

ah ah

129

shh Kind - ness kind - ness

136

kind - ness kind - ness kind -

143

ness kind - ness Thread of light wink - ing through

150

cha - os. kind - ness kind - ness